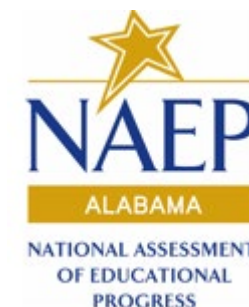




2022-2023 Student Assessment State Data Overview

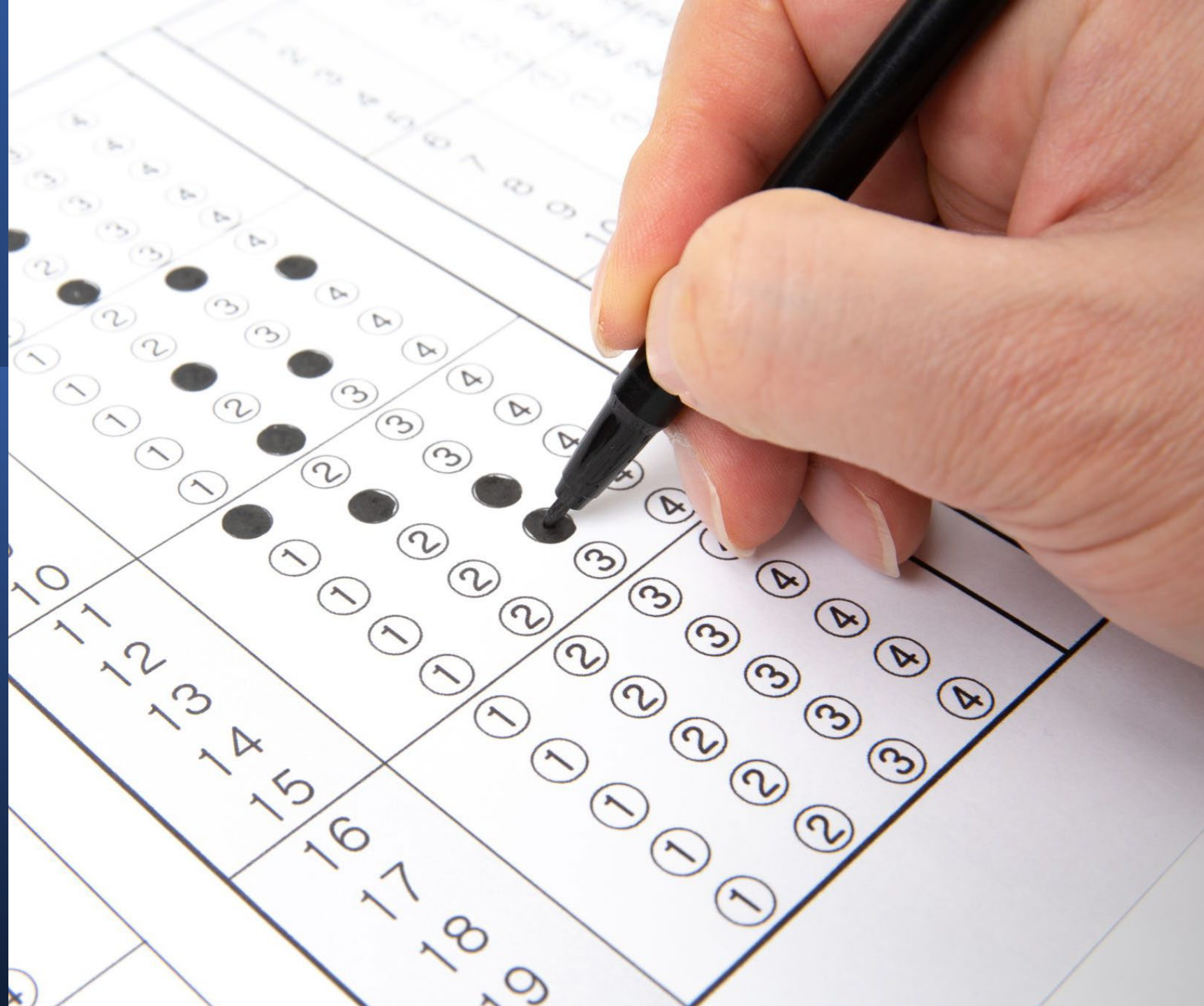
July 2023



2022-2023 Assessments

Assessment	Grade(s)
<i>ACCESS for ELLs</i>	K-12
<i>ACT with Writing</i>	11
<i>ACAP Alternate</i>	2-8, 10, 11
<i>ACAP Summative</i>	2-8
<i>PreACT</i>	10
<i>ACT WorkKeys</i>	12 (Optional)

Assessment Results



Preliminary Data

2022-2023 Participation				
Assessment		ELA	Math	Science
ACT with Writing		93.03%	95.99%	95.91%
ACAP Summative		99.25%	99.15%	98.95%
ACAP Alternative		94.68%	94.53%	93.41%

Calculated using raw data from vendor. No business rules attached.

Preliminary Data

ACT with Writing												
Percentage of Students Tested by Proficiency Level and Total Percentage Proficient (Level 3 + Level 4)												
	Total Students Tested		Level 1		Level 2		Level 3		Level 4		Proficient (Level 3 + Level 4)	
	Spring 2022	Spring 2023	Spring 2022	Spring 2023	Spring 2022	Spring 2023	Spring 2022	Spring 2023	Spring 2022	Spring 2023	Spring 2022	Spring 2023
ELA	46,370	46,794	38%	36%	33%	34%	17%	17%	12%	13%	29%	30%
Math	47,850	48,037	48%	46%	29%	30%	16%	16%	8%	9%	23%	25%
Science	47,813	48,015	39%	37%	30%	31%	25%	26%	6%	7%	31%	33%

	2020-2021	2021-2022	2022-2023
Average ACT State Composite Score	17.2	17.3	17.4

Calculated using raw data from vendor.



Preliminary Data

ACAP SUMMATIVE - ELA												
Percentage of Students Tested by Proficiency Level												
	Total Students Tested		Level 1		Level 2		Level 3		Level 4		Proficient (Level 3 + Level 4)	
Grade	Spring 2022	Spring 2023	Spring 2022	Spring 2023	Spring 2022	Spring 2023	Spring 2022	Spring 2023	Spring 2022	Spring 2023	Spring 2022	Spring 2023
2	52,922	53,992	19%	17%	32%	30%	37%	33%	12%	21%	49%	54%
3	52,565	52,580	9%	14%	36%	32%	41%	37%	13%	17%	55%	54%
4	52,980	52,399	11%	19%	36%	26%	41%	35%	13%	19%	53%	54%
5	53,149	53,198	10%	20%	43%	24%	39%	34%	8%	22%	47%	56%
6	54,018	53,230	14%	16%	38%	33%	41%	29%	7%	22%	48%	51%
7	55,674	54,365	15%	19%	40%	32%	40%	25%	4%	25%	45%	50%
8	56,201	55,623	9%	15%	38%	35%	41%	28%	13%	22%	53%	50%

Preliminary Data

ACAP SUMMATIVE - MATH

Percentage of Students Tested by Proficiency Level

	Total Students Tested		Level 1		Level 2		Level 3		Level 4		Proficient (Level 3 + Level 4)	
Grade	Spring 2022	Spring 2023	Spring 2022	Spring 2023	Spring 2022	Spring 2023	Spring 2022	Spring 2023	Spring 2022	Spring 2023	Spring 2022	Spring 2023
2	53,056	54,176	28%	23%	28%	30%	28%	32%	17%	16%	44%	48%
3	52,669	52,743	27%	24%	33%	32%	29%	31%	11%	13%	40%	44%
4	53,074	52,556	26%	22%	42%	43%	22%	23%	9%	12%	32%	35%
5	53,253	53,327	26%	23%	43%	43%	23%	26%	9%	9%	32%	35%
6	54,104	53,360	25%	20%	46%	49%	22%	21%	7%	10%	29%	31%
7	55,756	54,489	39%	37%	42%	42%	15%	17%	3%	4%	18%	21%
8	56,254	55,716	25%	27%	56%	51%	15%	17%	4%	4%	18%	21%

Preliminary Data

ACAP SUMMATIVE - SCIENCE

Percentage of Students Tested by Proficiency Level

	Total Students Tested		Level 1		Level 2		Level 3		Level 4		Proficient (Level 3 + Level 4)	
Grade	Spring 2022	Spring 2023	Spring 2022	Spring 2023	Spring 2022	Spring 2023	Spring 2022	Spring 2023	Spring 2022	Spring 2023	Spring 2022	Spring 2023
4	53,019	52,524	15%	15%	45%	44%	29%	30%	10%	11%	39%	41%
6	54,050	53,302	15%	13%	57%	57%	21%	23%	7%	7%	28%	30%
8	56,153	55,610	13%	15%	47%	44%	34%	35%	7%	6%	40%	41%

Preliminary Data

ACAP ALTERNATE SPRING - ELA

Percentage of Students Tested by Proficiency Level

	Total Students Tested		Level 1		Level 2		Level 3		Level 4		Proficient (Level 3 + Level 4)	
Grade	Spring 2022	Spring 2023	Spring 2022	Spring 2023	Spring 2022	Spring 2023	Spring 2022	Spring 2023	Spring 2022	Spring 2023	Spring 2022	Spring 2023
2	602	591	33%	26%	55%	56%	11%	18%	2%	0%	12%	18%
3	651	765	21%	22%	51%	52%	28%	26%	0%	1%	28%	27%
4	629	736	19%	14%	61%	60%	19%	25%	0%	1%	20%	26%
5	669	708	43%	36%	29%	43%	26%	18%	2%	3%	29%	21%
6	682	732	29%	27%	43%	48%	26%	24%	2%	1%	28%	25%
7	703	744	22%	25%	40%	35%	31%	31%	8%	9%	39%	40%
8	712	767	33%	30%	44%	46%	21%	22%	1%	2%	22%	24%
10	615	687	20%	17%	47%	46%	31%	35%	2%	2%	33%	37%
11	628	645	22%	25%	39%	34%	36%	39%	3%	1%	39%	40%

ACAP ALTERNATE SPRING - MATH

Percentage of Students Tested by Proficiency Level

	Total Students Tested		Level 1		Level 2		Level 3		Level 4		Proficient (Level 3 + Level 4)	
Grade	Spring 2022	Spring 2023	Spring 2022	Spring 2023	Spring 2022	Spring 2023	Spring 2022	Spring 2023	Spring 2022	Spring 2023	Spring 2022	Spring 2023
2	601	590	33%	35%	57%	63%	9%	2%	1%	0%	10%	2%
3	651	766	20%	18%	71%	69%	8%	13%	1%	0%	9%	13%
4	629	737	18%	10%	62%	75%	19%	14%	0%	0%	20%	14%
5	668	707	16%	14%	64%	66%	20%	17%	0%	4%	20%	21%
6	681	729	16%	26%	54%	53%	28%	20%	1%	1%	30%	21%
7	701	742	17%	24%	53%	63%	29%	10%	0%	4%	30%	14%
8	706	765	17%	23%	77%	65%	6%	11%	0%	1%	6%	12%
10	614	688	16%	13%	80%	69%	4%	16%	0%	2%	4%	18%
11	631	645	12%	29%	56%	65%	28%	4%	3%	2%	32%	6%

Calculated using raw data from vendor.

Preliminary Data

ACAP ALTERNATE SPRING - SCIENCE												
Percentage of Students Tested by Proficiency Level												
	Total Students Tested		Level 1		Level 2		Level 3		Level 4		Proficient (Level 3 + Level 4)	
Grade	Spring 2022	Spring 2023	Spring 2022	Spring 2023	Spring 2022	Spring 2023	Spring 2022	Spring 2023	Spring 2022	Spring 2023	Spring 2022	Spring 2023
4	629	734	21%	16%	32%	32%	38%	45%	9%	7%	47%	52%
6	678	726	17%	13%	46%	54%	36%	32%	1%	0%	38%	32%
8	705	766	15%	10%	40%	40%	39%	47%	5%	4%	44%	51%
10	613	684	15%	14%	37%	42%	44%	38%	4%	7%	47%	45%
11	630	641	12%	9%	39%	39%	48%	51%	1%	1%	49%	52%



Calculated using raw data from vendor.

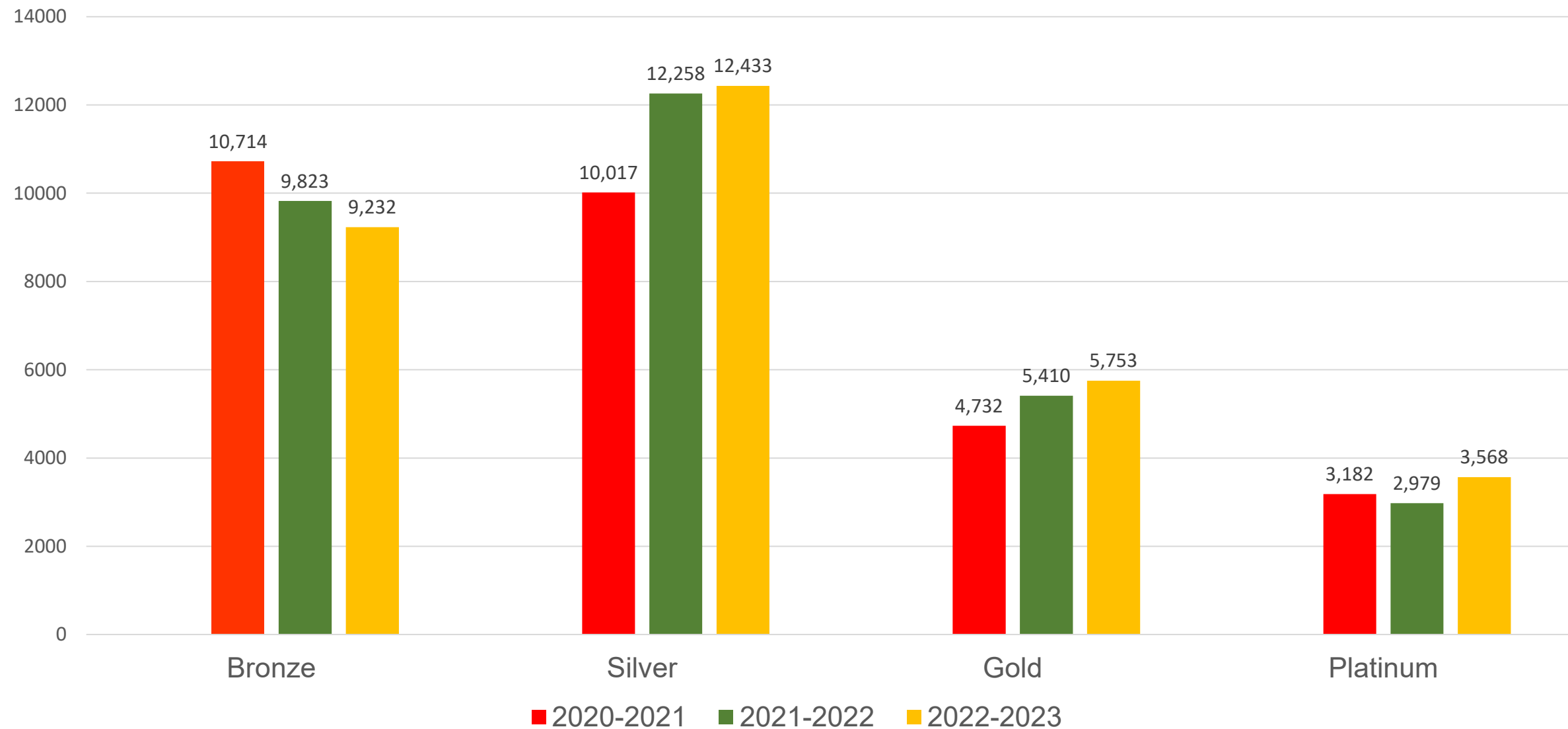
ACCESS for ELLs

	2020-2021	2021-2022	2022-2023
Students Tested	32,709	37,138	41,081
Students Exited	1,469 (4.49%)	1,765 (4.75%)	1,989 (4.84%)



ACT WorkKeys

National Career Readiness Certificates (NCRCs)



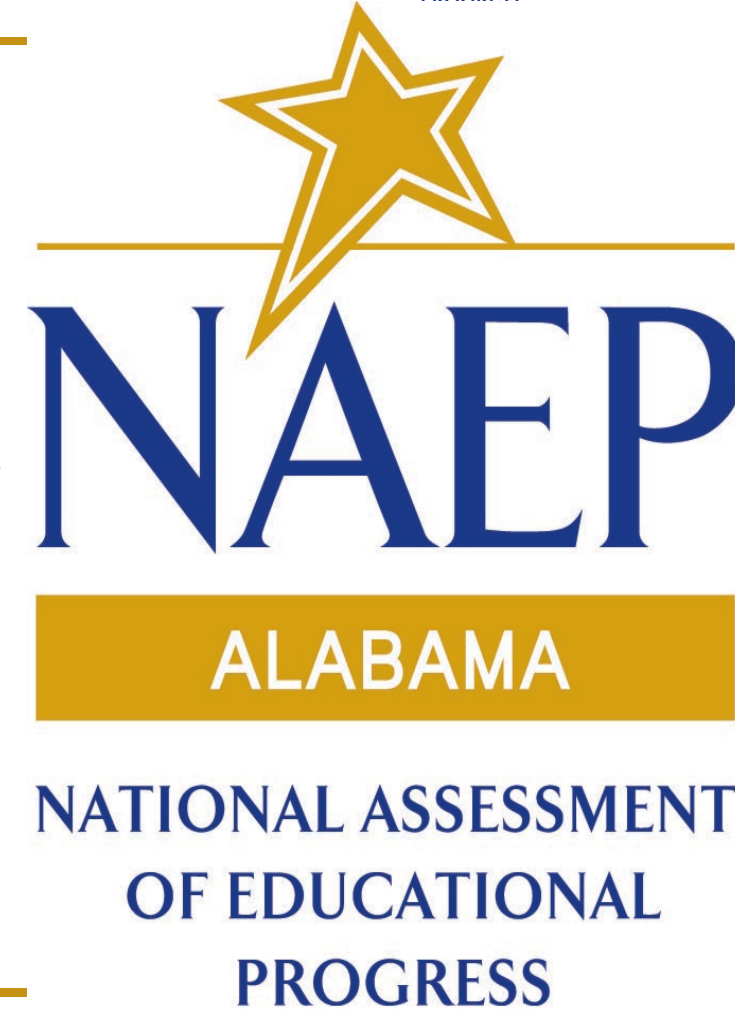
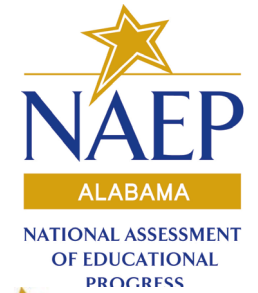
NAEP 2023-2024

NAEP- The National Assessment of Educational Progress (NAEP) will take place between January 29 and March 8, 2024

- This survey measures students performance in Grades 4, 8, and 12
- Students will respond to questions in mathematics, reading, or science and each student will answer questions in only one subject
- NAEP will ask to use school-based Internet-when possible
- Districts have been notified and schools will be notified no later than July 14
- State results will be released for grades 4 and 8, but no state results for Grade 12

High School Transcript Study

- High Schools selected for NAEP grade 12 assessments will also participate in the HSTS
 - Student transcripts and course catalogs will be collected
 - Students will not have to complete additional assessments for the HSTS
 - Information will be used to examine course taking patterns of students and relate those patterns to educational achievement and NAEP assessment data
 - National results will be released
-



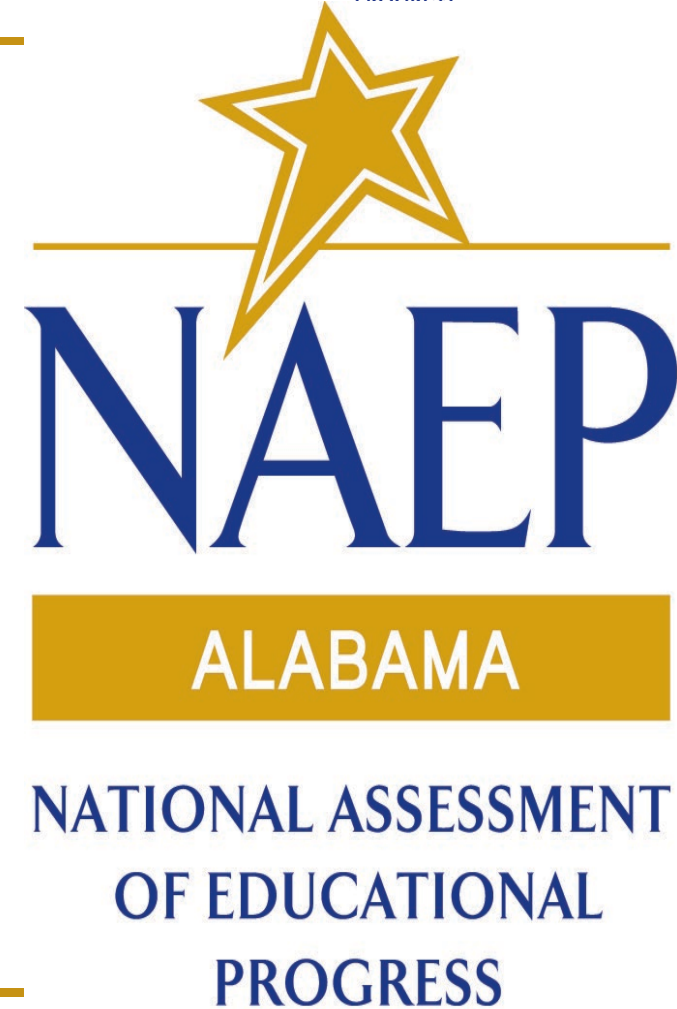
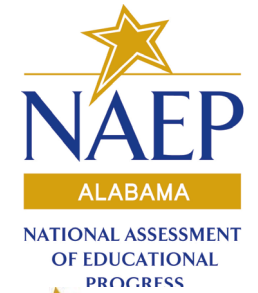
NAEP 2023-2024

Field Trial

- NAEP will assess schools selected for the Field Trial between November 6-17, 2023
- 3 schools in Alabama were selected for the Field Trial
- Students from Grades 4, 8, and 12 will respond to questions in mathematics and reading
- Students from Grade 8 only will respond to questions in Science
- Results will not be released

International: TALIS

- The Teaching and Learning International Survey (TALIS) will take place in March and April of 2024
 - This survey asks teachers and principals questions about their backgrounds, work environments, professional development, and beliefs and attitudes about teaching.
 - Only 2 schools in Alabama were selected to participate
 - Teachers will receive \$25 for completing the Teacher Questionnaire and schools will receive \$200 for participating
 - Districts have been notified and schools will be notified no later than July 14
 - National results will be released
-



NAEP 2023-2024

Pilot Study- will take place between January 29 and March 8, 2024

- 18 schools were selected for the Pilot Study
- Will evaluate new items, continue to explore online assessment platform, and study the transition to different devices that students are most familiar with
- Students will respond to questions in mathematics and reading
- Students will complete survey questions about educational experiences and opportunities to learn in and outside the classroom
- Districts have been notified and schools will be notified no later than July 14
- Results will not be released

